

Welcome to **SANDY COMMUNITY 27** **EMERGENCY PLANNING**

WHO IS PART OF SANDY COMMUNITY 27?

Community 27 consists of seven neighborhoods/wards. Each neighborhood has an Emergency Coordinator that is responsible for implementing our community plan in case of an emergency.

The Emergency Coordinators inform all residents within their ward boundaries on the emergency plans and procedures that are in place and upcoming educational events.

In the event of an emergency, the Emergency Coordinators will help facilitate a community response and assistance until local government authorities can mobilize.

PLEASE NOTE: The Sandy Community 27 Emergency Response plan does not manage or assume responsibility for evacuations, or the housing and feeding of displaced households.

The Sandy Community 27 Emergency Response Teams will endeavor to help each household prepare in advance for such possibilities by providing information and training, but these are **individual family responsibilities**.

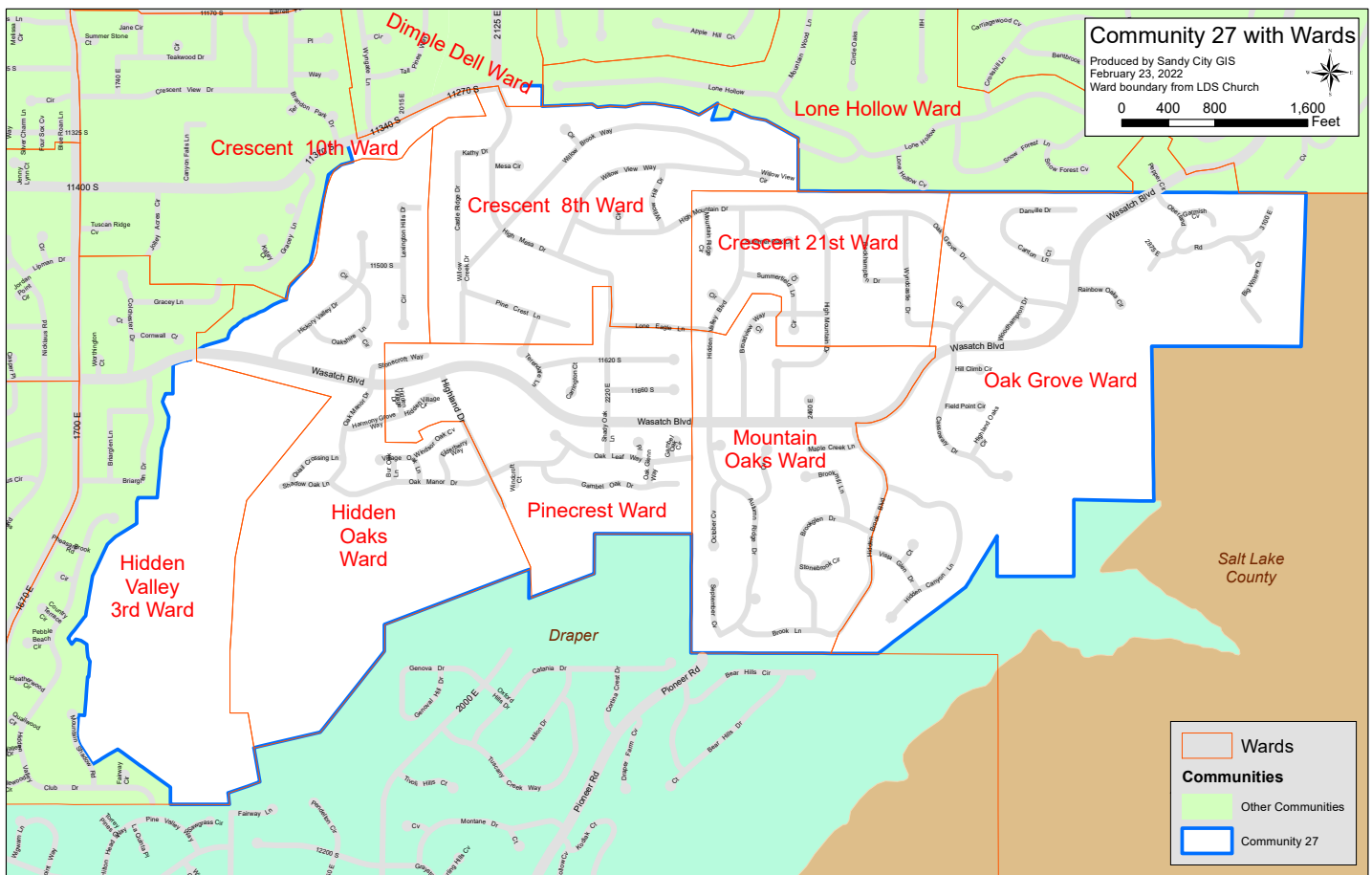
Our goal is to help every member of Sandy Community 27 to become more self-reliant and prepared for emergencies. We are stronger together!



Sandy Community 27 also has a Stake Emergency Coordinator who oversees all Neighborhood/Ward Emergency Coordinators.

These neighborhoods/wards are:

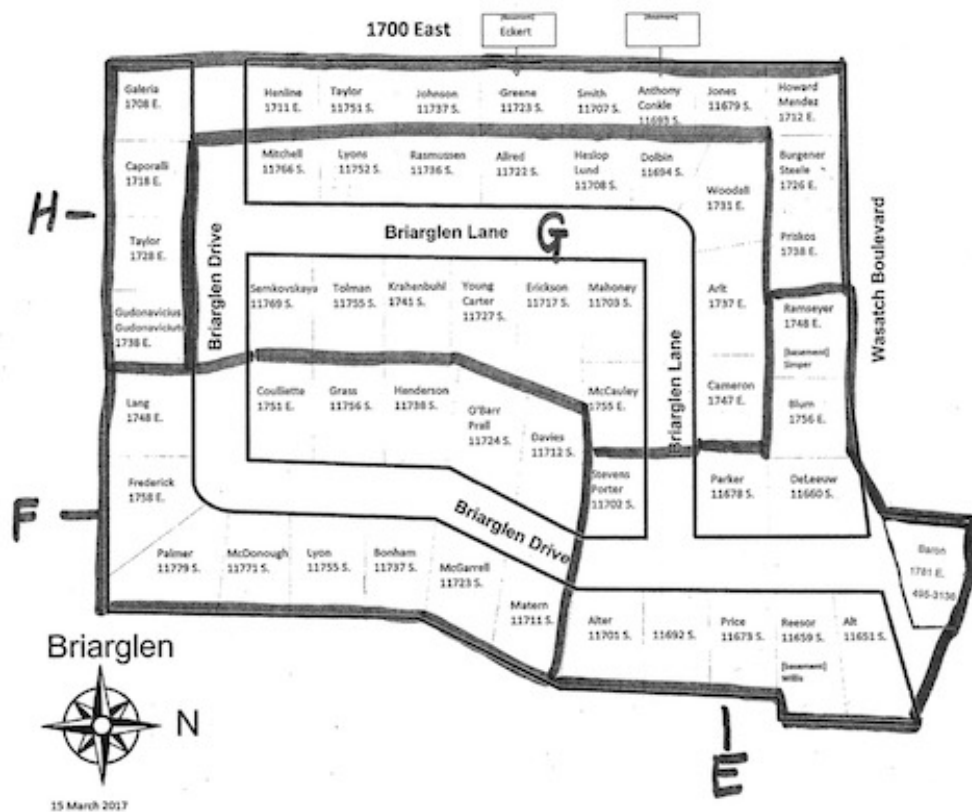
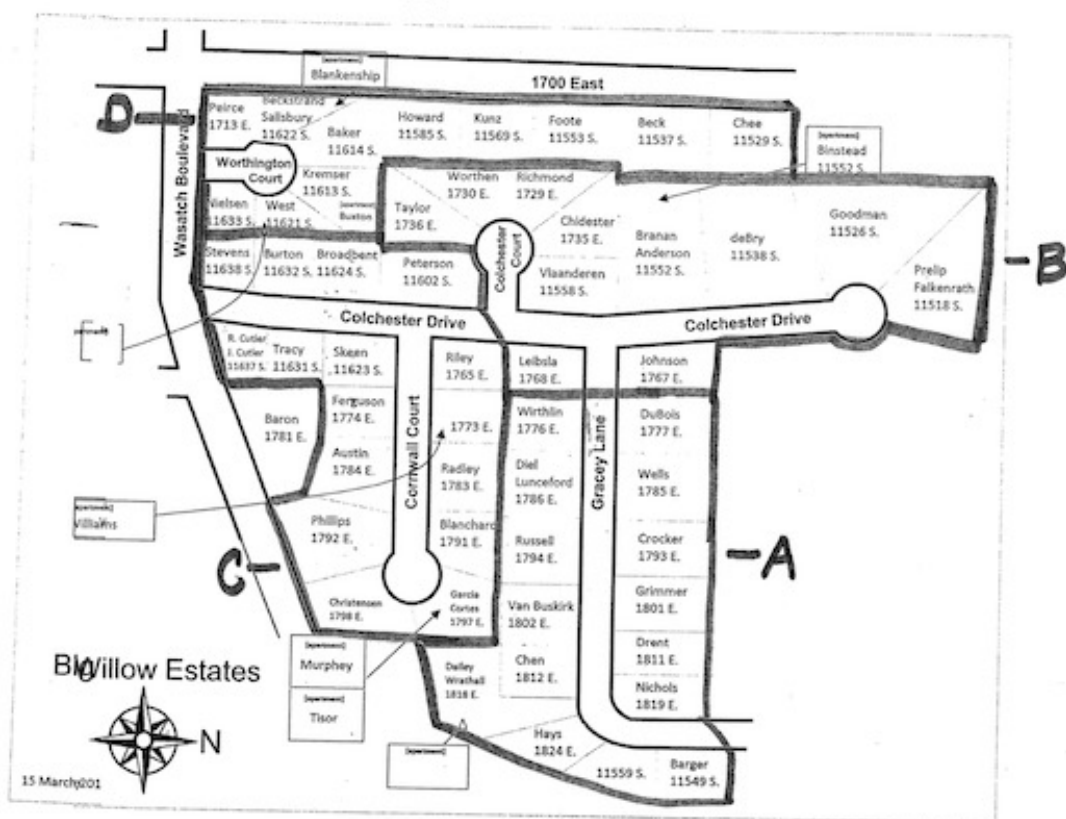
1. Hidden Valley 3rd
2. Hidden Oaks
3. Crescent 8th
4. Pinecrest
5. Crescent 21st
6. Mountain Oaks
7. Oak Grove

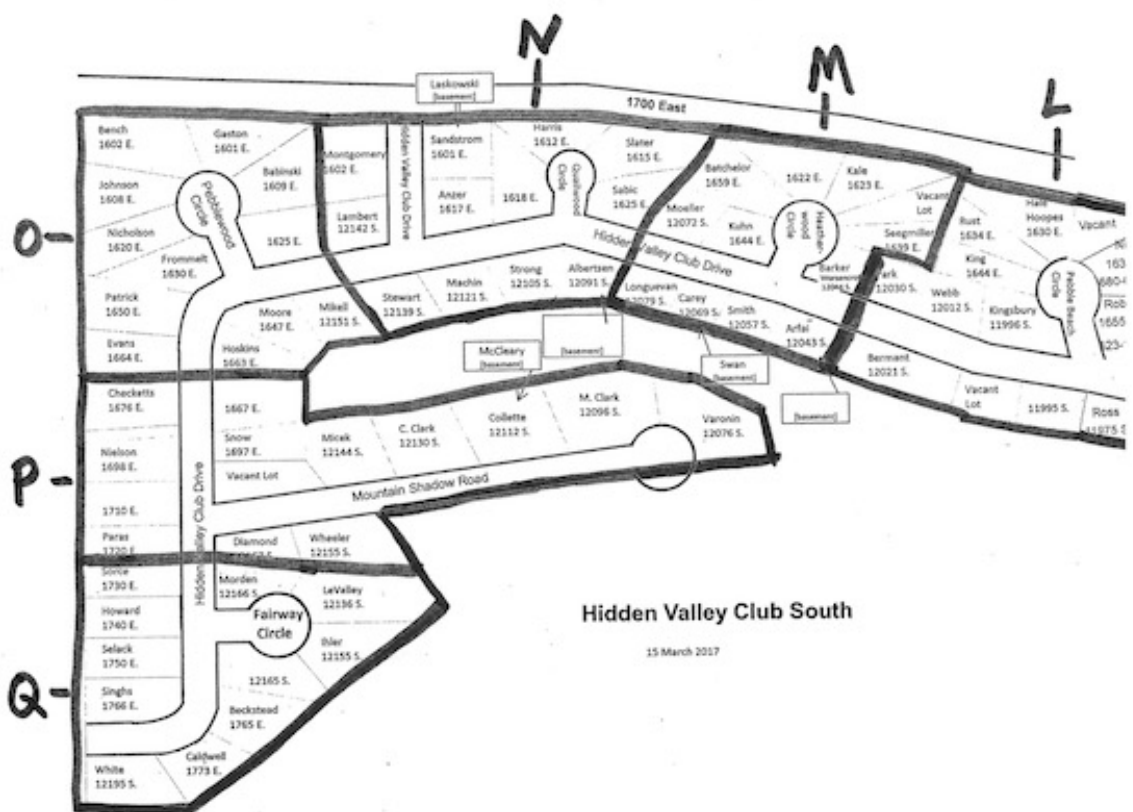
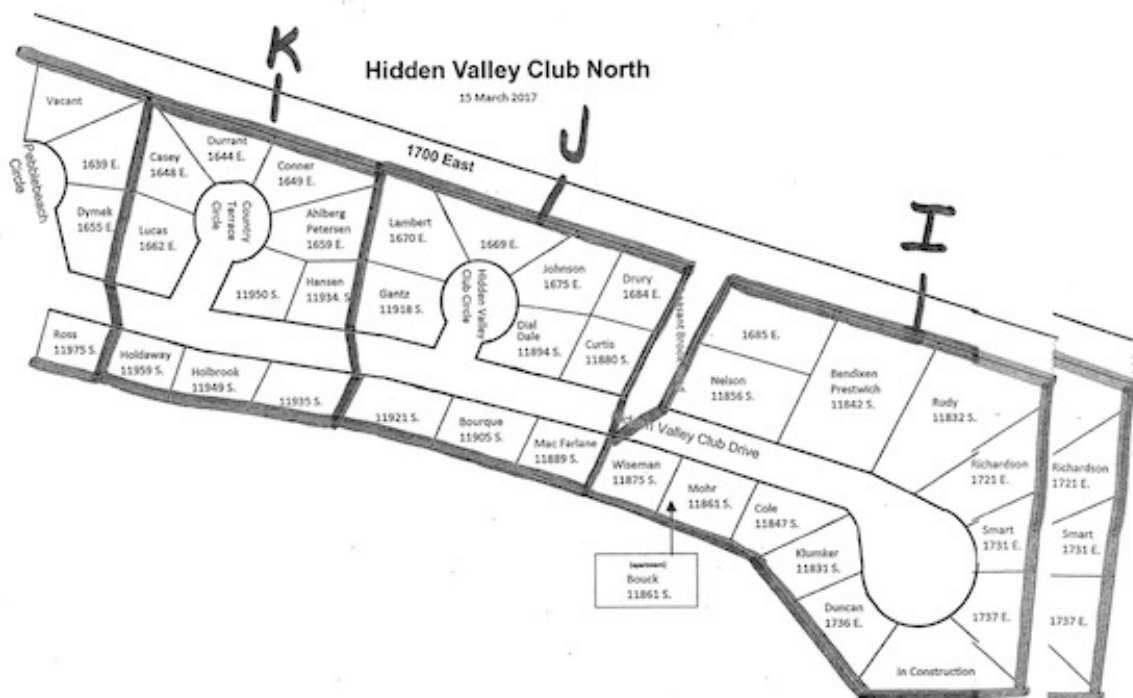


Each of these neighborhoods/wards are further broken down into zones. Each zone consists of approximately 12 homes. Each zone will have a zone leader that will evaluate the immediate needs of each home within their zone and report this information to the Emergency Coordinator.

HIDDEN VALLEY 3RD NEIGHBORHOOD







WHY HAVE A COMMUNITY PLAN?

We know that in the event of an emergency having a community and family plan is in place crucial.

Sandy City Community 27 has an emergency response and communications plan in place in the event of an emergency.

Understand that if a big disaster or catastrophe strikes, you and your family are probably on your own for the first several days after an event.

WHY?

Police officers, firefighters, and other emergency personnel are not immune to disasters. They will first need to take care of their own families.

It will take time for city and state officials to mobilize and respond. They will then have to figure out what areas have been impacted and where to send emergency resources.

Ambulances, police cars, and firetrucks may not be available if they are damaged or if the roads are impassable.

This is where the community emergency plan comes in. But, to make it work, each member of the community needs to be knowledgeable and involved.

WHAT IS OUR COMMUNITY PLAN?

To best explain how our emergency community plan would work, let's take a large earthquake along the Wasatch Front as our scenario.

Imagine that we have just experienced a large earthquake that has affected a large majority of Salt Lake County. As you can imagine, there is much chaos and emergency services are overwhelmed. The phone lines may be down, and communication may be lost.

WHAT DO YOU DO?

First, take care of your own family
Make sure your home is safe and structurally sound

Second, check on your neighbors
This is where the smaller zone areas will come in.

If you or your neighbor needs help, relay this information to your Zone Leader so they can get this information to the Emergency Coordinator.

NOTE: Wait, I don't know who the zone leader is?!? What if the zone leader is not available?!?

The nice thing about this plan is that the while it would be nice to have your Zone Leader readily available, that may not be the case in an emergency.

Anyone who is willing and able to take on this role and gather information on the status of their neighbors is welcome. This is why it is important for all community members to have a basic understanding of how the community emergency plan functions.

ASSESSMENTS

Zone Leaders will color-tag houses to help determine who has been assessed and who needs help.

You can also use your own method of color-tagging to indicate that you need help by:

- Adding a colored ribbon in your mailbox or door
- Colored door hangar
- Colored construction paper

ASSESSMENT STATUS

Zone Leaders check on residents and determine their status.

Houses are color-tagged to help designate who has been assessed and which resident needs help.

CERT teams and emergency responders will be given address where "HELP NEEDED" is indicated.

OK MINOR

HELP NEEDED

URGENT HELP NEEDED

DEATH

REPORT

Once all the Zone Leaders have reported to the Emergency Coordinator, they will then report to the Stake Emergency Coordinator at their Wards Command Center location.

Sandy City Community 27 will have two command centers. Lone Peak Elementary and the LDS Church building by Hidden Valley Park.

The following Neighborhood/Wards will check in at Lone Peak Elementary:

- Hidden Valley 3rd
- Hidden Oaks
- Crescent 8th
- Pinecrest

The following Wards will check in at the LDS building by Hidden Valley Park:

- Crescent 21st
- Mountain Oaks
- Oak Grove

The Stake Emergency Coordinator will communicate between all wards in Community 27 and Sandy City. The Stake Emergency Coordinator will operate out of the LDS church building next to Hidden Valley Park.

Once all the Wards have checked in at their LDS Ward Boundaries Command Center, the information that has been gathered will be taken to the Lone Peak Elementary Command Center, and then to Sandy City.

Sandy City and the State of Utah will be able to use this information on how to proceed.

HOW WILL WE COMMUNICATE?

The purpose of an emergency communication plan is to relay the information on the status of every household to the appropriate emergency responders.

This is accomplished through Zone Leaders, Emergency Coordinators, Ward Leaders, and Stake Leaders. The status of our community is then relayed to the Sandy City Emergency Operations Command Center, FEMA, or other emergency responders.

Another purpose of a communications plan is to relay information to Sandy Community 27 from local leaders.

This information could include the nature and extent of the emergency we have faced, what aid and supplies are available to us, and applicable evacuation information.

In the event telephone or cellular service is not available, alternative forms of communication will be used.

This could include:

- Ham Radios
- Satellite phones
- Out-of-state relays
- Runners

ULTIMATELY YOU ARE RESPONSIBLE FOR YOURSELF AND YOUR FAMILY

In the event of an emergency everyone is expected to first ensure the safety and well-being of their own household and then to check on and render assistance to their neighbors as needed. Zone Leaders, Emergency Coordinators, and Ward and Stake Leaders are then expected to execute the Communications Plan as described.

Note that the Emergency Response plan is focused on determining the status and needs of individual households, facilitating communications between households and government officials or other emergency responders, and providing limited emergency assistance.

The Sandy Community 27 Emergency Response plan does not manage or assume responsibility for evacuations, or the housing and feeding of displaced households.

The Sandy Community 27 Emergency Response Teams will endeavor to help each household prepare in advance for such possibilities by providing information and training, but these are individual family responsibilities.

Having some simple, yet crucial, supplies in place will help our community be more resilient, prepared while we wait for services to be restored.

Each household should have extra emergency supplies on hand, including:

- **Extra food**
- **Drinking water**
- **Alternative shelter**
- **Cooking supplies**
- **72-hour kits**
- **First-aid kits**
- **Sanitation and hygiene items**